

Issue ten - 2007

sktoday

Latest news from South Kesteven District Council

Community policing

Why local bobbies
are getting up close
and personal

What you told us
A review of our
residents' survey



"Listening Learning Delivering"



Fly-tipping menace

Successful prosecution leads to a purge on the menace of fly-tipping



Bourne to run

A special focus on the new fitness activities available at Bourne leisure centre



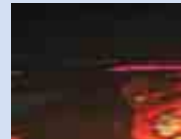
A world first

World-first research project into decontamination at Stamford car park



Partnership success

SKDC and police have hailed an anti-social behaviour course a huge success



A magical ride

Stretch your imagination as we step into the magical world of a ball pond!



Making headlines

Guess which television news presenter is appearing in the area? See page 15

It's a shining improvement

MANY of South Kesteven's food outlets have seen a dramatic improvement in cleanliness since the introduction of the council's Food Hygiene Star Awards – that's the message from SKDC's healthy communities manager, David Price.

David reports that his team of food safety inspectors are happily recording that the rate of improvement is double the rate of decline, with hundreds of outlets – from pubs to clubs and restaurants to your local "greasy spoon" coming under the assessing eye of the SKDC inspection team.

"We are delighted how well the food stars concept has improved food hygiene and management standards in South Kesteven," says David. "In some cases, establishments have made massive improvement because they received bad publicity when they received no stars and it affected their trade. Also, those businesses displaying their food stars awards are offering customers tangible evidence of all the work that goes on behind the scenes. Kitchens are now cleaner and staff better trained in food handling and storage."

Many outlets which started from a low level have made a major investment in time and money to improve their standards, whilst others receiving reasonable or good grades in the first place have shown a real desire to improve to the next level.



SKDC environmental health practitioner, Christian Polzin, who manages the awards scheme, added: "Proprietors take a real pride in the rating they receive. Even if they get four stars (a very high standard), they are still really keen to attain the five star "excellent" standard. "The scheme has proved a real success. As one of the first councils to introduce such a system in the UK, we are now advising other councils and contributing to the introduction of a national 'scores on the doors' scheme."

For information on Food Stars visit:
www.southkesteven.gov.uk/healthy

ABOVE: Inspector Claire Watson is pictured during a routine inspection of a local kitchen.



SKDC is part of

CLARET world-first

THE Department of Trade and Industry has awarded a £235,000 grant to enable a world-first research project to start at the Wharf Road car park in Stamford.

SKDC is working with a selection of specialist organisations to assess the long-term effects of the decontamination work that is being carried out at the car park. The work is known as the CLARET project, which is just as well as it stands for Contaminated Land: Assessment of Remedial by Electrical Tomography!

Put simply, this means that a series of electrical probes are buried in the ground to automatically monitor the site after the decontamination work has been undertaken.

Pete Rogers, a member of the SKDC environmental health team, says: "We're delighted that we have been awarded the maximum grant to undertake our work in Stamford. We're combining our statutory duty to clean up contaminated land with taking part in an innovative, state-of-the-art research project, which could revolutionise how contaminated land is investigated."

SKDC has also secured over half a million

pounds to clean up the Wharf Road car park, the largest sum of money paid to any local authority by the Department of the Environment, Food and Rural Affairs (DEFRA). The work is being done to prevent contamination of the River Welland.

And SKDC received more good news when learning that it is now listed in the top 20 local authorities in England for its contaminated land investigation work.



ABOVE: The SKDC management team working on the project - Alistair Prentice, Pete Rogers, and Paul Stokes.

Increased turn-out for local elections

THURSDAY 3 May saw an increase in voter turn-out, when 34.55% of eligible voters in South Kesteven cast their vote in local government elections, compared to 29% in 2003.

The results were declared as follows:

Conservatives 35 (up 1)
 Labour 2 (down 5)
 Liberal Democrats 6 (up 1)
 Independent/New Independent 15 (up 5)
 2 seats were vacant before the election.

The district saw 20 contested wards up for grabs, plus a further 11 parish/town council elections. 78 polling stations opened throughout South Kesteven, each with its own presiding officer and polling clerk.

Sue Gibson, the electoral services officer, explained that in addition to voting at polling stations, an additional 8,500 postal votes in contested wards and 3,500 in parish and district elections were sent out.

She added that major changes for the latest elections included government policy requiring that each returned postal vote is now security scanned, whilst for the first time any voter was allowed a postal vote – previously there needed to be extenuating circumstances for such votes to be cast.



SKDC fly-tipping plea after **successful prosecution**

MOST people are angered by fly-tipping which defaces our towns and villages and I would urge someone who sees fly-tipping to report it to us – that’s the message from SKDC enforcement officer, Gwen Mayo.

The plea for public assistance follows a recent successful prosecution of a Newark man, who was fined by Grantham magistrates for fly-tipping an industrial fridge in Long Bennington last year.

Mandy Braithwaite, who prosecuted for SKDC, added: “A member of the public appeared in court as a witness for the council. Her evidence was essential – without it we would not have been successful. Gwen Mayo, who explained that “the witness was outstanding and we really appreciate her help,” echoed her view.

Gwen added that fly-tipping does far

more harm than pure defacement, adding: “Fly-tipping can also be dangerous as young children or wildlife can get trapped in the rubbish. Imagine what could have happened if an inquisitive youngster had been playing in the large, airtight, dumped industrial fridge.

Commendation for SKDC – and our residents too!

SKDC has received a commendation from the “Municipal Journal” – a trade magazine in the local government sector – for improvements made in its waste collection service and for the amount of rubbish recycled by residents.

The magazine assesses local council services as part of its annual achievement awards, and SKDC’s commendation came in the ‘Transforming Public Services’ category.

Beverly Agass, SKDC strategic director, said: “We’re delighted that our new and improved service has been recognised. This is down to the hard work of our waste management team who have overseen the phasing in of the wheelie bins.

“Our thanks must also go to residents as it is apparent that they are making a huge effort to reduce the amount of waste they produce and to recycle much more of it.”

25,000 households now have wheelie bins and the residents’ satisfaction survey (see centre pages) shows people to be increasingly satisfied with them. Moreover, as reported in the last edition of *sktoday*, residents with these bins are now recycling an impressive 44% of their waste.

“We are determined to do all we can to stamp out this problem and have four inspectors as well as two enforcement rangers and our refuse collection team all reporting fly-tipping incidents. But I cannot stress enough how important it is that the most important people of all - the general public - help us too.

“If you see someone fly-tipping, please report it to us as soon as possible.”

Contact: You can contact the SKDC street scene team on 01476 40 62 79.

Stevie's building a platform for the future

Stevie Jackson became the new Stamford town partnership manager in late February. Previously town centre manager for Oakham, she has a strong background in economic regeneration through workforce development in both the public and private sectors. So what are her early impressions of the job, and of Stamford in general, where her office is at the town's railway station. Certainly a case of starting out on the right track!



Q: Why move from Oakham to Stamford?

A: I loved my job in Oakham but the time comes when you're ready for a change. Stamford is a beautiful place with a good, well-established business infrastructure.

Q: Is it too early to ask what your main priorities will be?

A: To an extent as I am still gathering information. I don't believe in sweeping into a job and transforming things immediately. I'm listening and learning as it's currently quite a controversial time.

A vital aspect of my role will be to coordinate the work on behalf of everybody involved in the town partnership in a way that benefits the whole team. That means working with representatives from Stamford Town Council, SKDC, business and the community. I've been so impressed already with how much work volunteers devote to the town.

Q: Is that because people have a great pride in their town?

A: There is a real sense of pride – and

also of a rich heritage, of which people are very protective – understandably so. Consequently, they want to have a say in the future of the town and be confident that safeguards are in place to protect that heritage.

Q: How will that happen?

A: Stamford Vision produced a document on where we'll be in 2015. We need to review it, including consulting with people about our strategic priorities, such as the relief road, car parking and the local development framework.

Q: What's your view about the current controversy about the town centre?

A: There is a focus on the work in the town centre but it will be short-lived. Currently, accessibility to the town is more difficult and I have made it a priority to talk to traders about the effect the work is having. Yes, there is an impact and I have been speaking to the Stamford Traders Association, which quite rightly has concerns, but we need to turn it into something positive.

The key message to everyone is that Stamford is well and truly open for business as usual.

Q: Is there clear evidence of the impact the work is having?

A: The work done on the numbers of people coming to Stamford shows that the footfall is actually up rather than down. The traders are experiencing a downturn in business and so it is hard to quantify.

Moreover, there is plenty of positive talk about how the town will look in the future and we are having discussions about putting on events to celebrate the opening of The Gateway.

I believe once it is up and running, people will really enjoy the area and the introduction of a pavement cafe style culture will produce a lovely environment that will help to promote Stamford.

Q: Your philosophy for the future in a sentence?

A: Everything we do must be about ensuring a vibrant town for the people who live, work and visit here.

It's a busy time at...



Bourne Leisure Centre

Spring is here and there's plenty of activity at the four leisure centres across the district – and this time round we're looking at what's happening at Bourne.

New coaching for children

THERE'S many a new skill to be learnt and/or developed, both on the water and dry land. Choose from:

- Gymnastics
- Trampolining
- Football
- Kayaking (also for adults).

The thrill of kayaking has proved so popular that two new kayaks have been bought to cater for the increasing demand of this popular sport.

A new look

THE upstairs activity and crèche area and the sports hall balcony viewing area were re-decorated in early April. Now your children can play – and you can watch (if for some reason you can't participate!) – in even more attractive surroundings!

Catering changes mean healthier approach

APRIL saw the centre unveil a new partnership with Leisure Extra to handle its café area – and that means a new look menu. At the time of going to press discussions were taking place to finalise a selection of healthier alternatives – although many of the old, well-established favourites will be retained too! Healthy drinks, such as organic squashes have already been introduced, and are also available in new vending machines, which have replaced the old fizzy drinks-only version.

Sponsorship reaps reward

AS part of its approach to helping people in the local community in their efforts to raise important funds for charity, the centre offered complimentary membership for six months to their impressive Harpers gym facility to two highly deserving cases to help with their training.

Health and fitness across the region

Deepings Leisure Centre – 01778 34 40 72
Grantham Meres Leisure Centre – 01476 58 19 30
Stamford Leisure Pool 01780 – 76 55 22



All the hard work certainly paid off and it's a massive well done to Gosia Wilkie who ran in the New York Marathon to raise funds for Mencap – and to Keith Gray who completed the Libyan Challenge in early spring. A superb effort by both.

Mark heading 'Down Under'

SOME folk have all the luck! Early last year, the swimming products company, Zoggs, ran a scratch card promotion and the lucky winner was Bourne Leisure Centre member, Mark Bailee. Having that all-important winning scratch card means that Mark and his family are jetting off on a free trip to

Australia this summer. Good on yer, mate. Have a great time!

For full details of the latest activities at Bourne Leisure Centre and/or to make a booking, just call 01778 42 14 35.

Steeped in history

Deeping St. James, situated in the southernmost corner of Lincolnshire, spreads along the banks of the River Welland, which has played a keen role in its development. Over recent years, it has witnessed major housing development as the village plays home to the commuting community, both to Peterborough and further afield.



ABOVE: The last steam train through Deeping St. James in 1968 - The Flying Scotsman. LEFT: Eastgate in Deeping St. James in 1910.

What's in a name?

The village is referred to in The Domesday Book as "Esdepinge" – meaning east fen or deep meadow.

A Norman beginning

Village history dates back to Norman times when Deeping St. James came into its own under the influence of Richard du Rulos, whose wife's mother was the daughter of Hereward the Wake (A stained glass window in the church is dedicated to him). A Benedictine priory was also established in 1139.



BELOW LEFT: Preparing for a big day out in the 1940s.



they were taken before the magistrate the following morning!

Almost opposite The Cross – and standing in private grounds – is a listed building called The Boat House (dating back to times of river traffic on the Welland). The lighters loaded

Water, water, everywhere

A 1571 Act of Parliament authorised improvements to the Welland to make it navigable from Stamford to the sea. 12 locks enabled vessels of up to seven feet beam to gain access to the Deepings. A fine three arched bridge dates back to 1651.

The Priory church and The Cross

Here is one of the largest churches in the area (seating 700) and one which looks resplendent in its floodlit glory. Dedicated to St. James, it dominates the village centre, and in its shadow stands an ancient monument known as The Cross, built of Barnack Rag stone and rebuilt in 1819 by Tailby Johnson. It was originally built as a five feet square "lock up" for those falling foul of the law, before

and unloaded here, whilst further reminders of the importance of the river are the Oriel Window and Lock Pen.

The window is situated in the property between the bridge and the High Locks, whilst Lock Pen (restored a few years ago) is one of the locks where lighters were guided through en route to Stamford.

Talking of journeys, our sincere thanks to Mrs Dorothea Price of the village's Family and Local History Group for her tremendous help in providing information for our own journey around the history of her village.

Since 2000 she and her small team ("my husband is the errand boy") have produced no less than five books about the village. A sixth – on the neighbouring village of Frognall – is currently in production to complete the half dozen.

Satisfaction with SKDC is on the increase!

THERE'S been a definite improvement in the services provided by South Kesteven District Council (SKDC) over the past three years – so say residents across the district.

All councils in England are required by central government to carry out the same survey every three years to enable progress to be accurately measured, with all results analysed to ensure they are representative of the population. The latest survey reveals approval of SKDC in general is up 9% since 2003-2004.

The council's new head of organisational improvements, Robert Moreland, warmly welcomed the notable increases in satisfaction levels. "This is excellent news," he said. "In previous surveys our residents told us what mattered most to them (including clean streets, recycling and community safety), which helped us identify which services to invest in.

"Now the results are beginning to come through, and although the services that residents identified as most important have seen dramatic rises, we can't afford to rest on our laurels. Our aim is to provide brilliant services, so we're going to keep getting better and better."

Areas witnessing significant levels of increase - compared with 2003-4 - include cleanliness of public land and public spaces, recycling and waste collection.



Waste and recycling

THERE'S no doubt that household waste collection and doorstep recycling collection are vital issues for South Kesteven's residents.

Here's what you had to say about these priority areas:

Household waste collection

- Nearly 74% of respondents were happy with the sack or bin provided for general household waste, compared to 57% in 2003.
- Over 81% were satisfied with street cleanliness following waste collection, compared to 75% in 2003.
- 84% were satisfied with the overall waste collection service, compared to 78% in 2003/4.

It was a similar story of improvement with the various elements of doorstep recycling collection and local recycling facilities, although the one aspect that saw a reduction in satisfaction was the cleanliness and tidiness of recycling sites.

Robert Moreland added: "By July, everyone will be able to recycle from their own doorstep, so we'll review the use and cleanliness of the sites then."



Communication: Why it is key to the SKDC approach

COMMUNICATION and consultation is at the heart of the SKDC approach – and people clearly have different ways of finding out what's going on!

Nearly 70% received most information directly from the council and the local media. Interestingly, whilst a high percentage felt well informed about issues such as bill-paying and registering to vote, people were less aware about other aspects of council activity.

For, example, just under half felt well informed about where the council spends its money – although hopefully the Council Tax special in the previous issue of sktoday helped to clarify matters (the survey was carried out in

late 2006).

Similarly, the level of satisfactory complaint handling has not risen since 2003-4. However, the latest survey was carried out before the new SKDC customer services centre opened in the late autumn of 2006.

Robert Moreland commented: "We are constantly seeking ways to improve all aspects of sktoday. Since the survey we have widened our distribution to make sure it reaches all households, and as this current edition shows, we've improved the quality of the print – all at no extra cost to our residents."

What **you** want for South Kesteven

A KEY feature of the survey is the question about what people believe are the top five improvements needed in their district. Over the last three years, residents' views have stayed fairly constant, with four of the five issues featuring on both occasions.

However, there are changes to report regarding where the various areas actually feature. Here's the current top five:

- 1 (2) The level of traffic congestion
- 2 (4) Activities for teenagers
- 3 (3) Road and pavement repairs
- 4 (-) Health services
- 5 (1) The level of crime
- 5 (-) Public transport

2003-2004 residents survey positions in brackets

THE main shift sees clean streets no longer in the top five (fifth in 2003-2004) with traffic congestion now viewed as the prime cause for concern, with activities for teenagers up to second place.

Robert Moreland responds: "These are issues where we have to work in partnership with others to achieve influence and gain improvements. On the issue of traffic congestion, we are working hard to persuade Lincolnshire County Council (as the highways authority) and central government that Grantham needs a southern relief road for the A52 and Tallington needs a bridge over the railway. We also want to take on parking enforcement from the police to ensure that cars are not parked illegally and blocking what are already busy town streets."

Respondents were also asked how satisfied or dissatisfied they were with their local area as a place to live. A fraction under 79% were satisfied (the question was not asked as part of the previous survey).

Here's a snapshot of the key results

- Overall satisfaction with SKDC – up 9%
- Satisfaction with SKDC's doorstep recycling – up 15%
- Satisfaction with SKDC's waste collection – up 6%
- Satisfaction with SKDC's sports and leisure facilities – up 5%
- Satisfaction with cleanliness of public spaces – up 17%
- Satisfaction with complaint handling – No change
- Satisfaction with theatres and concert halls – up 1%
- Satisfaction with parks and open spaces – up 3%

SKDC lands **£850,000** business grant



*ABOVE: Costa Coffee manager Gary Silverman and assistant manager Charlotte Farrell.
 RIGHT: Costa Coffee regular Karen Davies-Magellan enjoys a cuppa.*

THEY say that nothing breeds success like success – and SKDC has learnt how true that can be with the news that they have been awarded a government business grant of more than £850,000.

The actual figure - £865,272 - is the reward for SKDC's highly successful stimulation of new business growth across different areas of South Kesteven. For example, in Grantham alone recent new openings have included:

- Next
- TK MAXX
- Subway
- Costa Coffee
- Matalan
- Homebase
- Laura Ashley
- Au Naturelle

However, economic growth has also been strong across other parts of the district, with Stamford seeing the opening of a new Marks & Spencer store, as well as the provision of significant new office space.

Elsewhere, there's the twelve acre industrial development in Market Deeping and Bourne's Southfield Business Park.

It all bodes well for the economic future of the area, and it's into that future that SKDC will be investing their £865,000 reward, both to encourage further business growth and help with the economic regeneration of the district.

The award, given by the Local Authority Business Growth Incentive Scheme, seeks to encourage local authorities, such as SKDC, to build partnerships with local business and promote long-term economic development and growth.



Have you got news for us?

Has your village got a story to tell? Does it have an interesting past or maybe it boasts some fascinating characters? If you want your village in the spotlight, then let us know!

Email SKDC's communications unit at communications@southkesteven.gov.uk or telephone 01476 40 61 27.

New website name
 The Bourne Town Council website has a new address – you should now log on to www.bournetowncouncil.org.uk

SOUTH Kesteven District Council and Lincolnshire Police are working in partnership with one clear aim in mind – to improve the quality of life by making the district a safer place for everyone.

As part of that determination, Lincolnshire Police is committed to providing residents with increased policing resources across South Kesteven that are easily identifiable and locally accessible to all.

There are now nine Neighbourhood Policing Teams across the district, each with a Community Beat Manager, supported by a current team of 24 Police Community Support Officers (PSCOs) – a visible presence in your local community. The nine teams are divided into:

- Grantham Town East
- Grantham Town Centre
- Grantham North Rural
- Grantham South Rural
- Grantham Town West
- Witham on the Hill
- Billingborough and Bourne Town
- Market Deeping and Deeping St. James
- Stamford Town

Contacting your local team

If you want to get in touch with your local Neighbourhood Policing Team, contact Lincolnshire Police on 01522 53 22 22.

They can provide you with the name of your local Beat Manager and the PCSOs, as well as their mobile phone details or email addresses – all designed to ensure you have no problem in contacting them about policing issues in your area.

Leaflets have also been produced with full details about each local team and the role they play in the local community. You can pick one up at the SKDC reception, in doctor's surgeries, libraries and community access points.



ABOVE: Community support officers Catherine Wright and Richard Lister are pictured with constable Julia Higgins

Helping to make South Kesteven even safer

Working together

THE SKDC community safety team works hand in hand with the Neighbourhood Policing Teams across South Kesteven.

The team includes PC Linda Maxwell, community safety officer Sandy Kavanagh and two part-time anti-social behaviour officers – Yvonne Ford and Jason Hall. They help the Neighbourhood Policing Teams with problems such as anti-social behaviour and provide support and advice, as well as helping to gather evidence in certain cases that may go through the courts.

There are many community projects and initiatives in place too that are jointly run and funded by SKDC and the police, such as Football Fairplay (see page 12) and anti-social behaviour schemes in local schools (see page 13).

As part of that determination, Lincolnshire Police is committed to providing residents with increased policing resources across South Kesteven that are easily identifiable and locally accessible to all.

Football first for South Kesteven

“

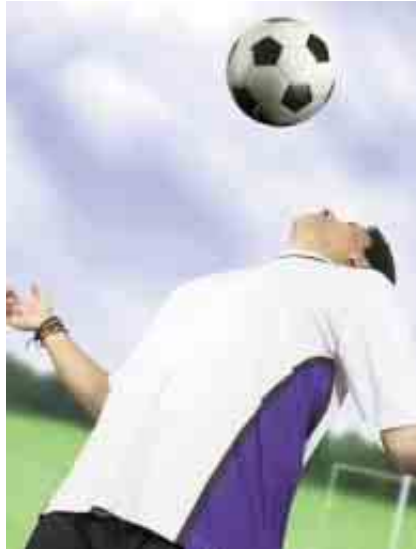
It's a fascinating project that aims to use the world's most popular game to teach young men the valuable lessons of respect and rules – as well as rewarding them for positive behaviour.

”

Question – how do you tackle the problems of drinking and low-level nuisance crime amongst 13-16 year-olds in Grantham?

Answer – set up organised football matches based on a highly successful project delivered in Lincoln called Football Fairplay. And that's just what the SKDC anti-social behaviour team has done, in partnership with Connexions, Lincolnshire Police and local estate managers.

Those involved in the Lincoln blueprint recommended that the Grantham team focus on the main problem period of Friday evenings. Consequently, six area 'hotspots' were identified, with a team of boys selected from each area. Each team with its own mentor, meets to play football every Friday night over an eight-week period. They're awarded points for good behaviour, which are then deducted



should any incidents be brought to the attention of the police or Youth Service (they can also be banned from playing).

The 26 teenagers accumulating the most points will play in a finals day at the Grantham Town ground, with trophies for the finalists, winning team and the most exemplary participant.

The Lincolnshire Criminal Justice Board, as part of its 'Prevent and Deter' strategy to stop young people falling into criminal ways, has also endorsed the project. Moreover, the initiative reflects the importance of consulting with

young people, who told the powers that be that they were essentially bored, had nowhere to go and would appreciate organised football matches.

It's a fascinating project that aims to use the world's most popular game to teach young men the valuable lessons of respect and rules – as well as rewarding them for positive behaviour.

We want to hear what you think...

FINDING out what matters to you, matters to us. That's why we want to know whether producing an annual report would be of use and interest to you – and the only way that we can find out is if you tell us.

The report would outline SKDC's achievements in 2006-7 and sets out what we aim to achieve over the next financial year. The report also gives a summary of SKDC's financial position for the year ending 31 March 2007, identifying the resources available to us. So, please provide us with your valuable feedback by taking the time to answer the following questions:

1. Would you find an annual report informative? *(please tick box)*
 Yes No
2. Would you be interested in receiving an annual report? *(please tick box)*
 No
 Yes, viewable in my local library
 Yes, viewable in my local customer service centre
 Yes, sent to me in hard copy
 Yes, emailed to me
 Yes, downloadable from the SKDC website

And, of course we would be delighted to hear about any other ideas you have about what could be featured in the report. Closing date is Friday 29 June 2007.

Please send your comments to:

- Freepost GM48, St. Peter's Hill, Grantham, NG31 6PZ.
- Email to communications@southkesteven.gov.uk
- Fax us on 01476 40 60 00

Grantham pupils earn 'Respect'

SKDC and Lincolnshire Police, who joined forces recently to work with pupils at Grantham Church School, have hailed a six-week course on anti-social behaviour a great success.

The course, jointly organised by Yvonne Ford, SKDC anti-social behaviour officer, and PCSO Gill Taylor from the Grantham Town East Neighbourhood Policing team, enabled 20 students to learn about anti-social behaviour, use of weapons, bullying and their rights within the law.

The idea came from Sharon Cipieres, who leads the school's behaviour improvement programme. She approached PCSO Taylor about putting together an educational course to help students understand the consequences of their behaviour in and out of school.

PCSO Taylor then approached SKDC's Yvonne Ford, a former Metropolitan policewoman, who is delighted with the outcome of the course. Yvonne told sktoday: "This was our first course and it has been a huge success. The students have learnt, for example, a great deal about how to deal with bullies, what support there is for them and how to report incidents.

"The success of the initiative is reflected in the fact that not only are we repeating the course with a new group of students, but also that other schools have asked for us to take it to them too."

During the course, students have been involved in reading poetry written by victims of bullying, various presentations and discussions, as well as finding out why they may be stopped and searched by police.

PCSO Taylor added: "We wanted the course to help the



ABOVE: SKDC anti-social behaviour officer Yvonne Ford and PCSO Gill Taylor from Lincolnshire Police chat with youngsters from Grantham Church School.

children to be able to think twice about their actions and how their behaviour could affect others.

"The government's 'Respect' programme focuses on helping both children and adults to show

tolerance, acceptance and common decency towards others. We wanted the students to be able to start taking responsibility for their behaviour and also to understand how it could have a negative impact on others whilst ultimately helping them develop a sense of respect.

"The students who attended the course and received their 'Respect' certificates were involved in the school's behaviour programme because of their previous actions in the classroom.

These previous actions may have involved a teacher or other pupil, but since being on the course there have been very few repeat incidents."

Contact

Schools requiring further information about the course can contact Yvonne Ford at SKDC on 01476 40 65 07.

Opportunity knocks

for local movie makers

THE Stamford Arts Centre's continual drive to promote film has taken a fascinating new turn – they want you to make a film.

All local filmmakers are being asked to enter three categories (based on your level of experience and resources) in the **Stamford Short Film festival**. The films will be shown on Saturday 21 July and during the day three screening rooms will show entries, with filmmakers encouraged to watch and exchange views on each other's work.

The winners in each category will have their work screened later in the year before the main features in the centre's cinema. There will also be a "People's Choice" winner as well as the individual category winners, where all judging will be done by an independent panel.

Stamford Arts Centre's Jo Dobbs, adds: "The festival is intended to be more than a competition. An exhibition space will be open and we'll have workshops and a forum – and hopefully a major film industry figure will attend too."

Entries must be no longer than 15 minutes and the closing date is 30 June 2007.

Drama for all ages

GRIPPING drama comes to Stamford in early June with the London Classic Theatre's production of **Nightfall by Joanna Murray-Smith**.

Described as "a tense and absorbing



ABOVE: Cast members from the London Classic Theatre's production of Nightfall - at Stamford Arts Centre.



LEFT: The highly innovative 'Ball Pond Bobby' by DNA.

contemporary thriller," this is a play that examines issues such as family values, love and loyalty. The London Classic Theatre is one of the UK's most prolific and thriving companies, with a high reputation for producing challenging and accessible drama of high quality.

Tickets are £10 (£8.50 for members) and there will be one performance on Wednesday 6 June at 8pm.

Stamford Arts Centre has long had a commitment to children's theatre too and the highly innovative "**Ball Pond**

Bobby" by DNA is their latest offering in this particular field. Bobby's trip to the pond is a journey into the world of a young child's wonderful imagination, as he encounters everything from lost socks, hidden games and magic sweets to mislaid toys, goldfish and balloons.

A special event for 2-5 year olds, Ball Pond Bobby features skilful puppetry, visual theatre, dance choreography and a specially composed soundtrack – all drawn from research with young children and how they play.

Tickets are £5 (£3.50) for the performance, which takes place on Friday 1 June at 2pm.

Contact: To book tickets for any of the events call 01780 76 32 03.

Fabulous folk and conspiracy theories!

NORMA Waterson and Martin

Carthy have been at the forefront of the English folk scene for the last 30 years or so – and their visit in June to Stamford will be a real family affair.

Joined by their daughter, singer and fiddle player Eliza Carthy, and original band member, Saul Rose, they now form Waterson:Carthy, one of our most influential and successful folk bands.

The pre-concert notes describe their latest album as “a rousing mix of ritual and religion, customs and carols, savage imagery and soaring songs of celebration.”

Find out for yourself on Wednesday

27 June at 8pm.
Tickets are £14 (concessions £12).

The latest in an impressive series of Royal Geographical Society lectures is to be given by journalist,

broadcaster and author, **David Aaronovitch** (Thursday 14 June).

For the last four years, Aaronovitch has been working on a book with the provisional title of *Voodoo Histories* –



an account of conspiracy theories and their impact on the world.

His lecture will include his analysis of many such theories, including the quest for the Holy Grail and that President Bush brought down the twin towers.

A regular columnist for *The Times* and *The Guardian*, Aaronovitch won the George Orwell Prize for political journalism in 1998 and 2001 and was the “What the Papers Say” Columnist of the Year in 2003.

Tickets cost £12 (£11 concessions) and £9 for RGS members.

Here is the news... in Grantham

HE'S the man we know as the anchor of the BBC Six O' clock news – he's **George Alagiah** - and he will be delivering “an intensely personal talk” at the Guildhall Arts Centre in Grantham (Friday 27 July).

The talk, called “Home from Home,” will see the BBC news presenter and foreign correspondent speak of his transformation from Tamil immigrant boy from Sri Lanka to his current very high profile place in the British media.

Much more than an autobiographical talk, Alagiah will tackle the great challenges of our ever-growing multicultural society. It promises to be a stimulating assessment of what the UK can offer immigrants and what they, in turn, can offer the UK.

Alagiah has won six reporting awards and has interviewed the likes of Nelson Mandela, Archbishop Desmond Tutu and President Robert Mugabe.

Tickets are £10 (£9 concessions).



Basil and Sybil at Fawley Towers

OTHER highlights at the Guildhall Arts Centre in Grantham include the Grantham Dramatic Society's take on the timeless BBC classic comedy, ‘**Fawlty Towers**’ (23 – 26 May - £8). If illusion is your thing, try not to miss out on ‘The Fabulous Magic of Dr Bondini’ (Saturday 16 June - £10/£8 concessions/£25 family ticket) – one of the few remaining touring illusion shows.

How to book your seats

TO make a booking and for details of a host of other artistic pleasures, ranging from ballet to jazz and drama to lunchtime literature talks, call the box office on 01476 40 61 58 or go online at www.guildhallartscentre.com

SKDC launches 'Healthy' website

THE importance of keeping fit and healthy is at the heart of a new SKDC website, aimed at helping you do just that. Check out the new Healthy Communities website, which went 'live' earlier this month. It features four key areas:

- Be Well
- Be Active
- Work Safe
- Eat Safe

Christian Polzin of the SKDC Healthy Communities team explained that "the site is aimed at our customers – the SK community. We think it's innovative, funky, attractive and different from many other public service websites."

Other leading features include:

- Your club online – local clubs and leisure facilities can register on-line and feature all their latest news, events and fixtures.
- Check out the best club, activity or facility that's right for you.
- Guidance for local employers and employees and the public on important health & safety and food issues.
- Useful advice on healthy eating, infections and diseases and help for people looking to quit smoking



(and guidance for employers about the imminent non-smoking legislation).

- Food hygiene stars ratings across the district (see page 2).

It's all there – and more – at the click of your mouse.

www.southkesteven.gov.uk/healthy

sktoday information guide

About sktoday

Proudly produced by South Kesteven District Council, **sktoday** is the voice of the South Kesteven District Council and forms the primary source of news about the council for the people of the district. The production costs for this free newsletter is £0.21 per household.

Alternative formats

This **sktoday** can be made available in other languages, large print, Braille, on audio tape or computer disc. If you, or someone you know, might benefit from the service, please contact us.

sktoday contact details

For distribution and editorial issues:
sktoday@southkesteven.gov.uk
Communications unit: 01476 40 61 27

Visit our website

You can download and/or view this issue of **sktoday** on our website:

www.southkesteven.gov.uk

General enquiries

Tel: 01476 40 60 80 (all offices)
Email:
customerservices@southkesteven.gov.uk
Website: www.southkesteven.gov.uk

Offices

Please note that the opening times for our centres will change as from 2nd April 2007. Below you will find our new opening times.

Main office

Council Offices
St. Peter's Hill
Grantham
Lincolnshire
NG31 6PZ
Opening hours: Monday, Tuesday
Thursday, 8.45am-5.15pm;
Wednesday 8.45am-4pm;
Friday 8.45am to 4.45pm

Stamford

1 Maiden Lane
Stamford
Lincolnshire
PE9 2AZ
Opening hours: Monday to Wednesday
9am-5pm; Thursday 9am-3.30pm;
Friday 9am-4.30pm.

Bourne

Town Hall
North Street
Bourne
Lincolnshire
PE10 9EA
Opening hours: Monday to Wednesday
9am-5pm; Thursday 9am-3.30pm;
Friday 9am-4.30pm.

Market Deeping

Deepings Community Centre
Douglas Road
Market Deeping
Lincolnshire
PE6 8PA
Opening hours: Monday to Friday,
9.30am-2pm.